



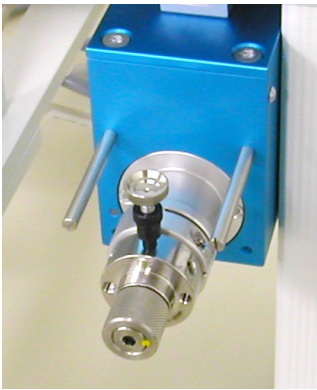
Technical Bulletin N0700 – Leap Pal Valve Maintenance (Changing or Cleaning the Valve Rotor)

The Leap Pal valve may require maintenance for cleaning or replacing the rotor. This technical bulletin guides you through the fairly easy process of opening the valve, removing and replacing the rotor, and re-sealing the valve.

Replacement valve rotors can be ordered through Valco (valve manufacturer) or through Leap.

Valco Part# SSAC6W; \$65.00 (2005)

Leap Part# 100.LC26R; \$94.00 (2005)



The valve body does not need to be taken off the valve actuator. To clean the valve, simply unscrew the knurled 'pre-load assembly', which is the big, round nut on the front of the valve. You will then have access to the valve rotor for replacement or cleaning. This generally takes only a few minutes.



Step 1

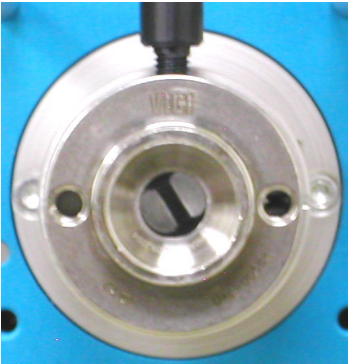
Unscrew the knurled preassembly off the front of the valve. This can usually be done by hand. You may want to wear a glove.





Step 2

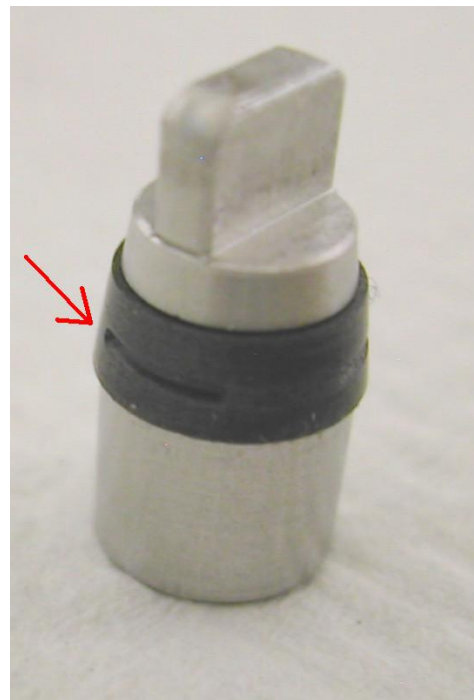
Use a clean pair of tweezers to extract the rotor from the valve face. Be careful not to scratch the inside of the valve.



Once the rotor has been extracted, you will be able to see inside the valve to the actuator. (left)

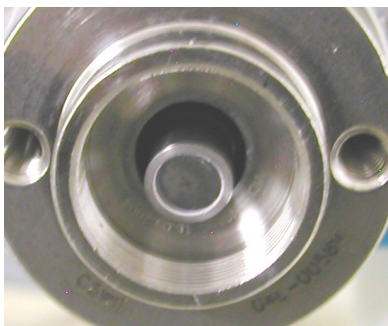
If you examine the rotor (right), you'll see slots in the dark Valcon H material

that act as the channels between the ports; as the rotor is thrown back and forth by the valve actuator, the different ports are connected. These slots can become dirty or blocked and may sometimes require only a simple cleaning. However, the rotor should be examined for excessive wear and if found, it should be replaced (part numbers above).



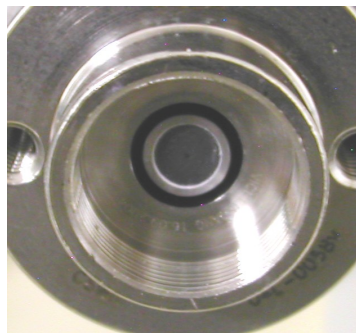
Once the rotor has been cleaned or replaced, begin by examining the back of the rotor. A small H appears on one side of the lip. This letter indicates that the material is Valcon H, a Teflon polymer. When inserting the rotor back into the valve head, this H must be oriented so the H is on the bottom half of the valve. If inserted upside-down, the valve will not work correctly.

Step 3



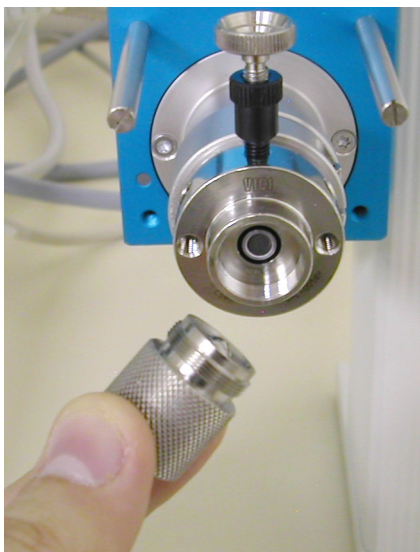
INCORRECT (Protruding)

When reinstalling the rotor, the rotor should be flush with the inside rim of the valve. On the left, the rotor flag is not aligned with the actuator while the valve on the right is perfect.



CORRECT (Flush)

Step 4



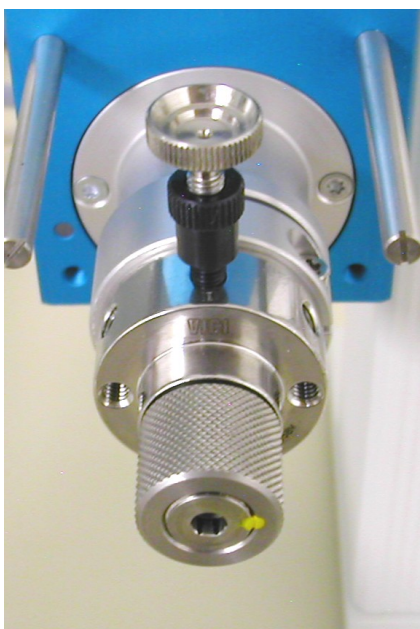
Make sure the rotor is still flush with the valve before reattaching the knurled pre-assembly. Place the pre-assembly into the face of the valve and screw in. There will be a moment when the resistance greatly increases. (Bottom left) At this point, the valve is still not tight. Twist the valve several more times until it hits a hard stop and cannot be turned anymore. (Bottom right)



LOOSE Pre-assembly



Properly Fit Pre-assembly



The Leap Pal valve should now be ready for use (left). It is recommended that your solvent of choice be flushed through each port as an initial wash of the rotor to rinse away any manufacturing debris or residue.