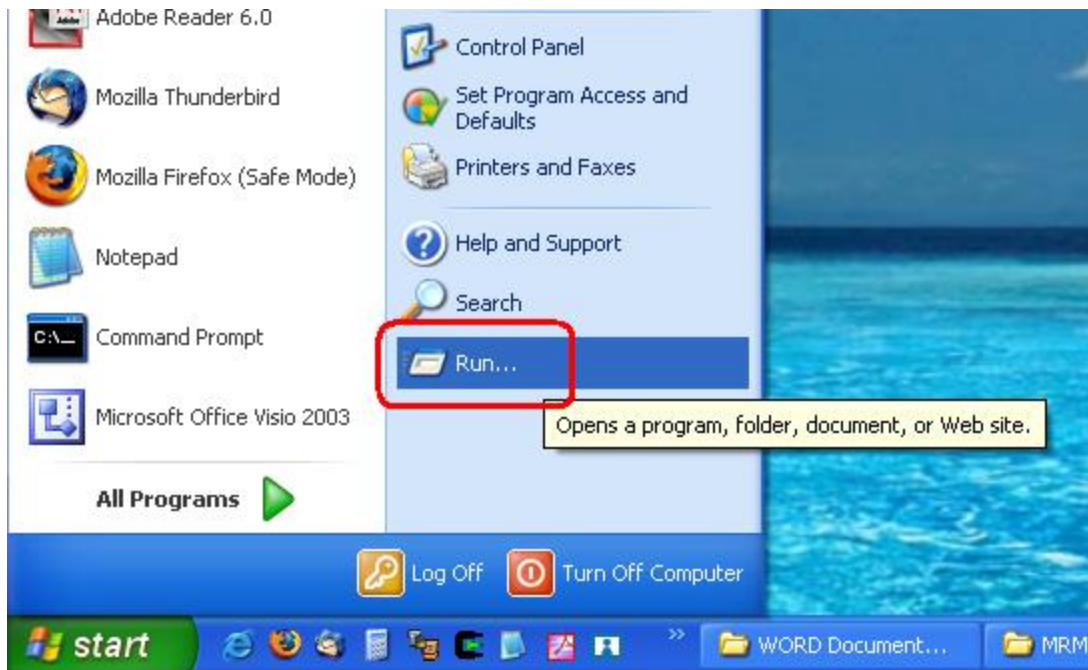


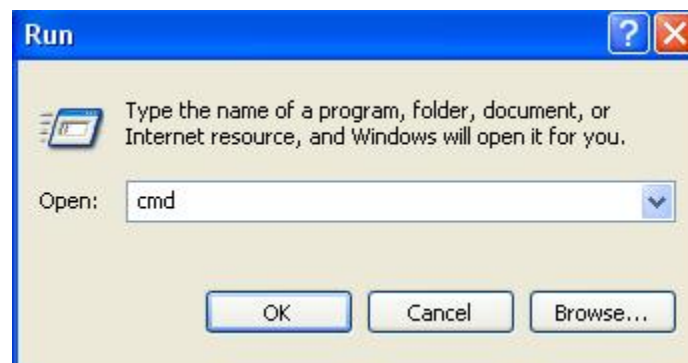
Technical Bulletin – Internet (Ping) Test

For One-Minute NMR Automation, there must be an Ethernet connection that is able to ping the NMR workstation IP address through Network

Click on the Windows 'Start' button, and select the Run option.



Type in "cmd" into the command line and then click 'ok'



A terminal window will appear. **Type in the word ping, a space, then the IP address of your NMR work station, and then hit the enter key.** (see example below)

```
C:\ C:\WINDOWS\system32\cmd.exe
Microsoft Windows XP [Version 5.1.2600]
(C) Copyright 1985-2001 Microsoft Corp.
C:\Documents and Settings\Aaron>ping 10.0.2.77_
```

A working connection (below) shows the computer ‘reply’s 4 times and then the program quits.

```
C:\ C:\WINDOWS\system32\cmd.exe
Microsoft Windows XP [Version 5.1.2600]
(C) Copyright 1985-2001 Microsoft Corp.
C:\Documents and Settings\Aaron>ping 10.0.2.77
Pinging 10.0.2.77 with 32 bytes of data:
Reply from 10.0.2.77: bytes=32 time<1ms TTL=128
Reply from 10.0.2.77: bytes=32 time<1ms TTL=128
Reply from 10.0.2.77: bytes=32 time<1ms TTL=128
Reply from 10.0.2.77: bytes=32 time<1ms TTL=128
Ping statistics for 10.0.2.77:
    Packets: Sent = 4, Received = 4, Lost = 0 (0% loss),
    Approximate round trip times in milli-seconds:
        Minimum = 0ms, Maximum = 0ms, Average = 0ms
C:\Documents and Settings\Aaron>_
```

Below is an example of a failed connection, the request times out 4 times and then quits.

```
C:\Documents and Settings\Aaron>ping 10.0.2.222
Pinging 10.0.2.222 with 32 bytes of data:
Request timed out.
Request timed out.
Request timed out.
Request timed out.
Ping statistics for 10.0.2.222:
    Packets: Sent = 4, Received = 0, Lost = 4 (100% loss),
C:\Documents and Settings\Aaron>_
```